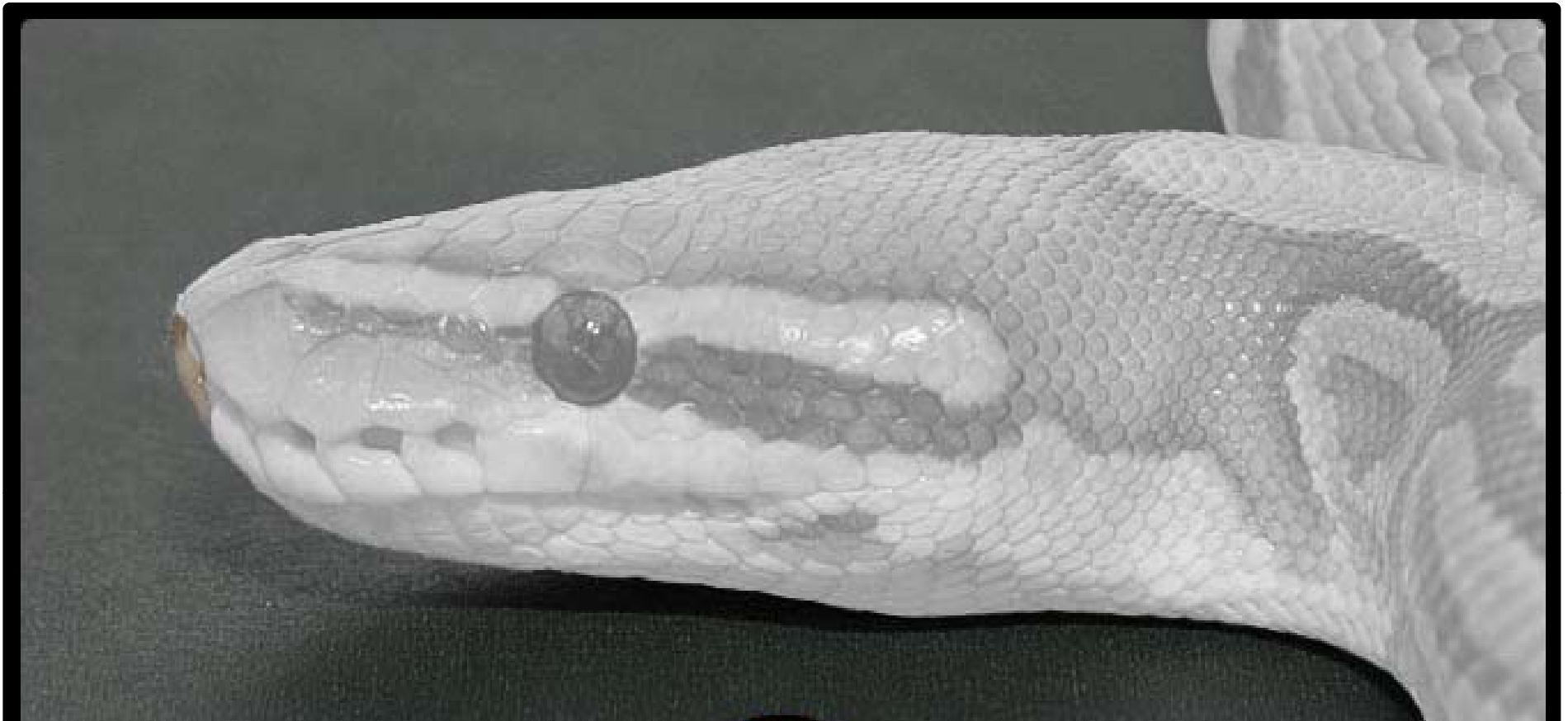




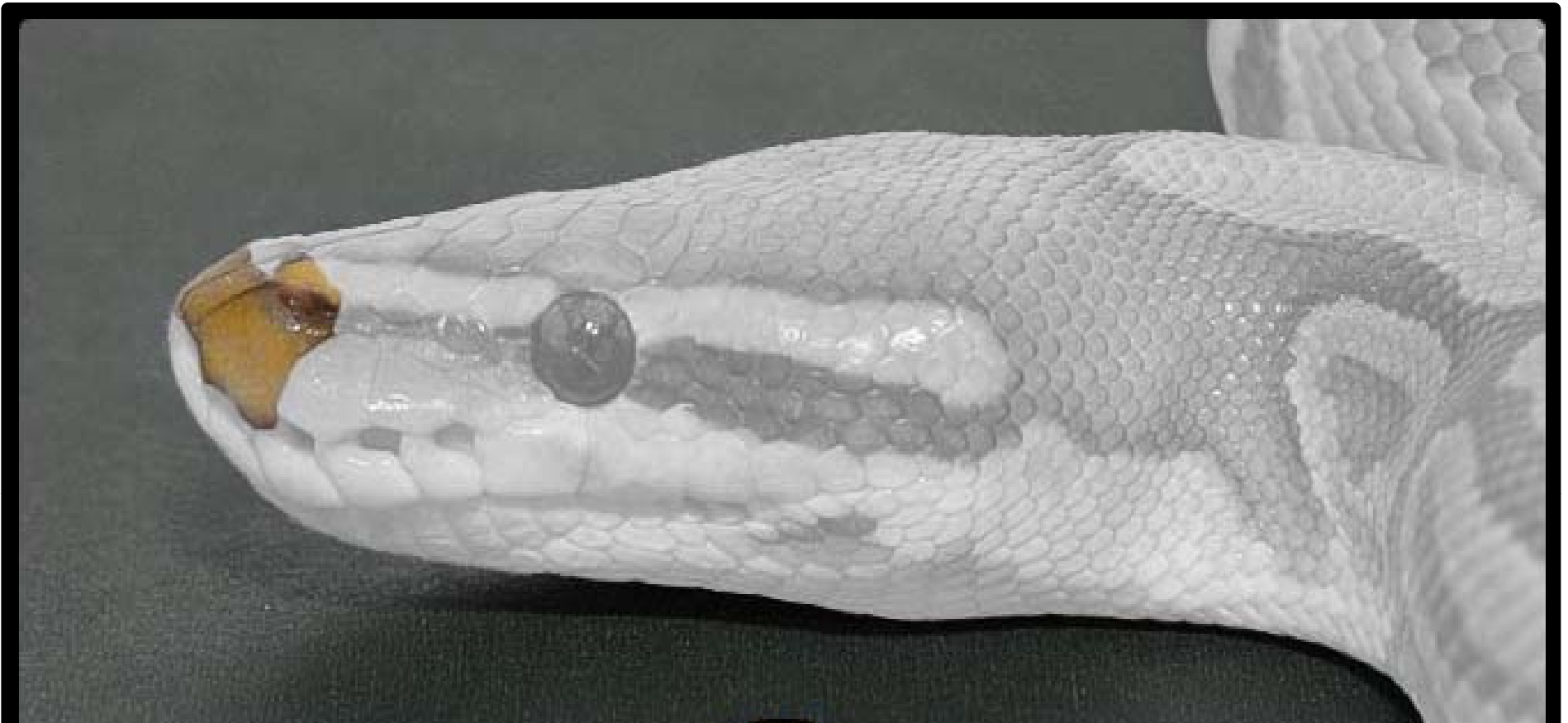
The scalation of
The Ball Python
(*Python regius*)

- rostral
- nasals
- nostril
- loreals
- oculars
- eye
- upper labials
- facial pits
- lower labials



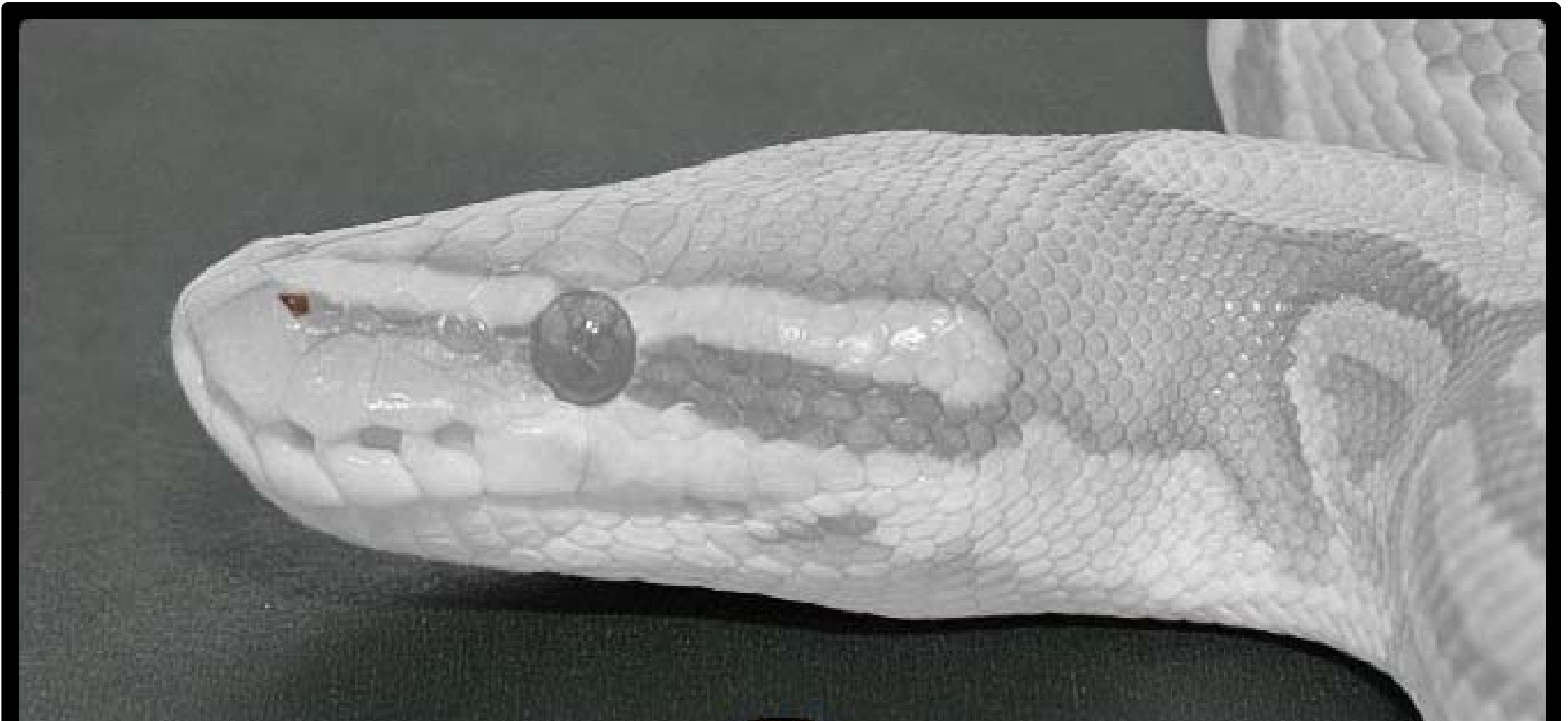
The scalation of
The Ball Python
(Python regius)

- **rostral**
- nasals
- nostril
- loreals
- oculars
- eye
- upper labials
- facial pits
- lower labials



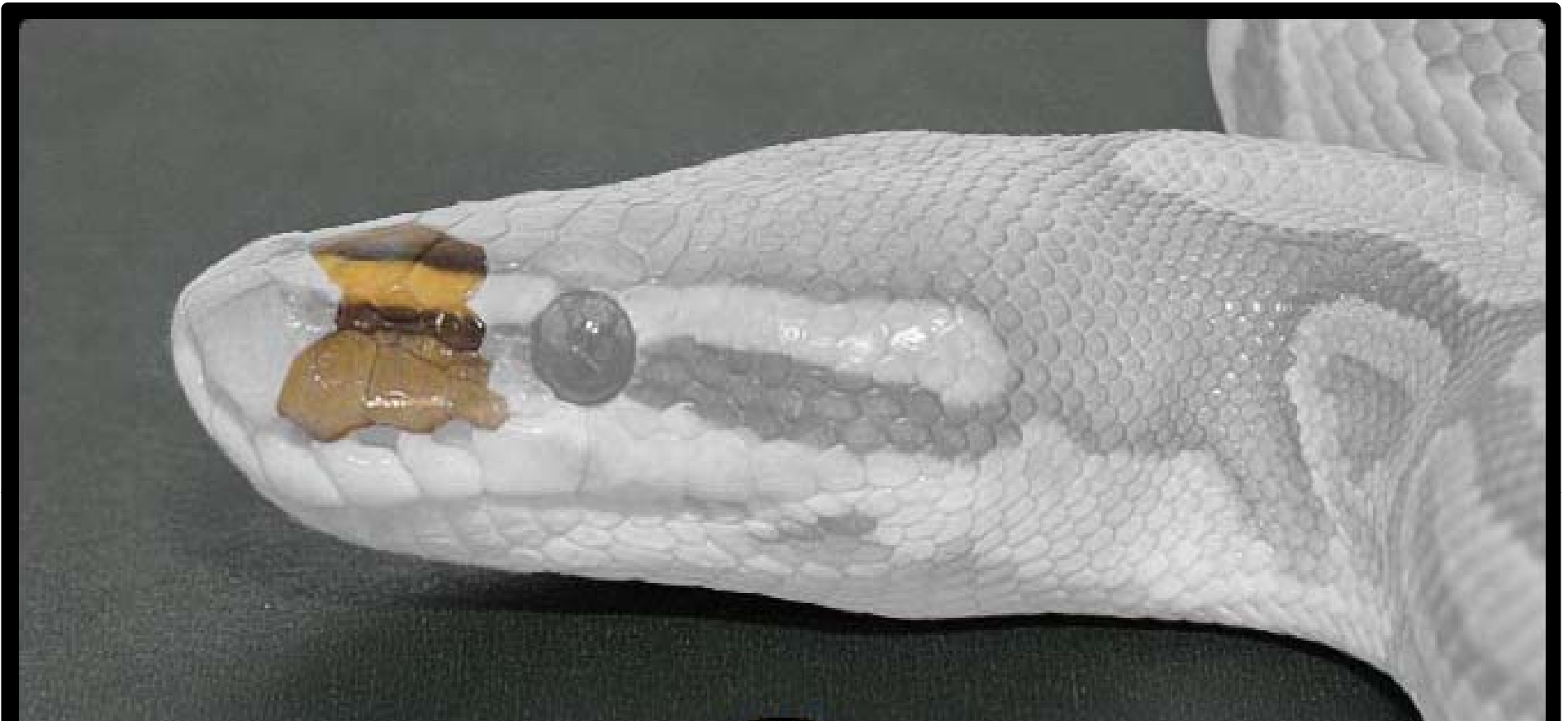
The scalation of
The Ball Python
(Python regius)

- rostral
- **nasals**
- nostril
- loreals
- oculars
- eye
- upper labials
- facial pits
- lower labials



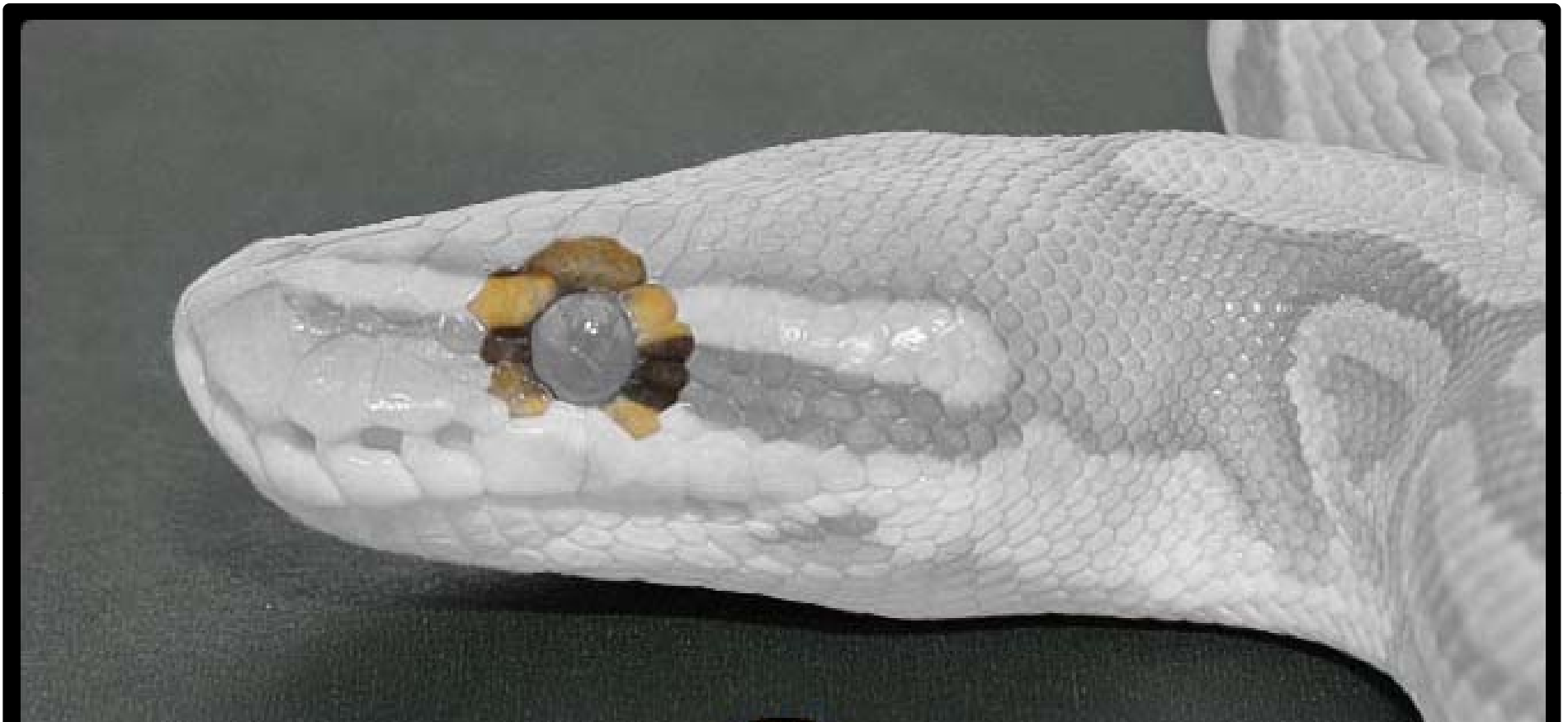
The scalation of
The Ball Python
(Python regius)

- rostral
- nasals
- **nostril**
- loreals
- oculars
- eye
- upper labials
- facial pits
- lower labials



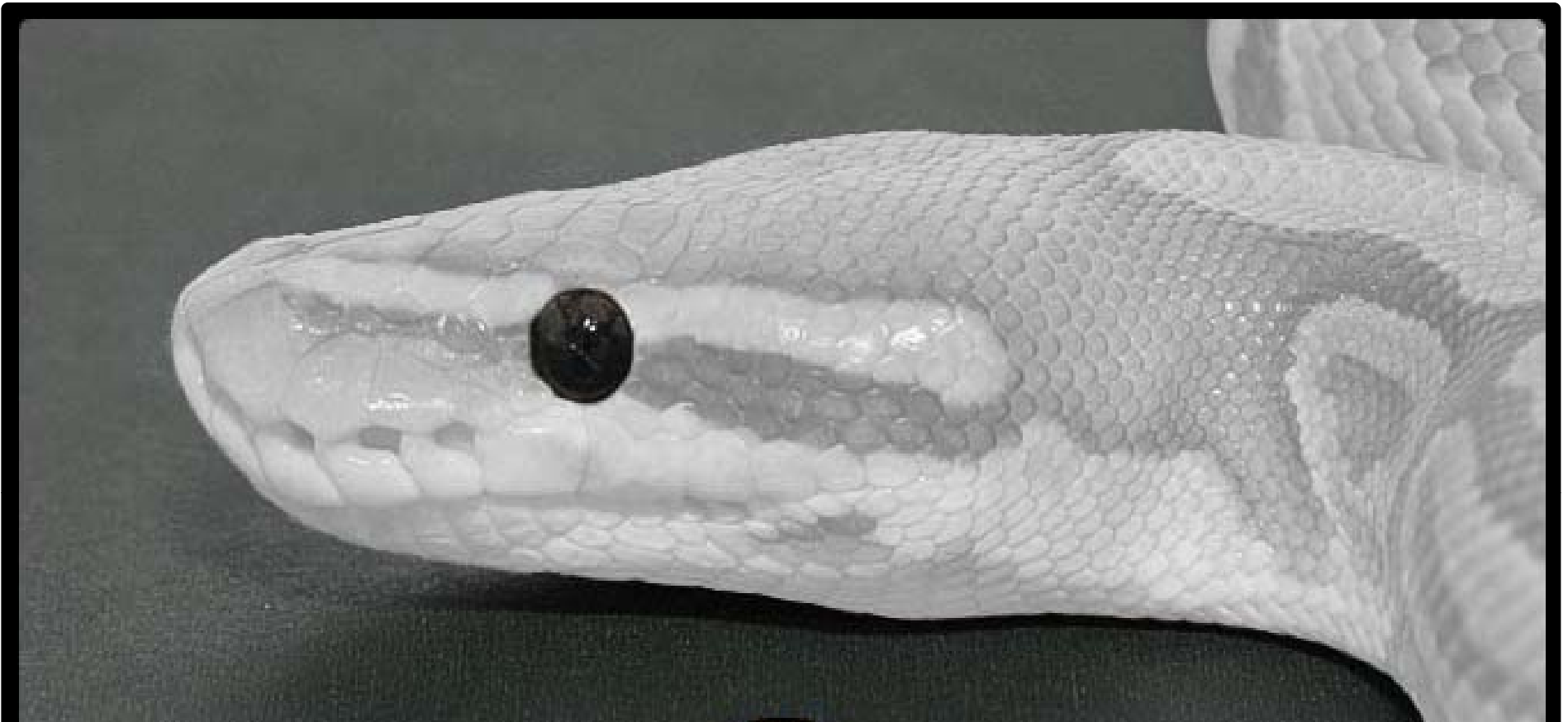
The scalation of
The Ball Python
(*Python regius*)

- rostral
- nasals
- nostril
- **loreats**
- oculars
- eye
- upper labials
- facial pits
- lower labials



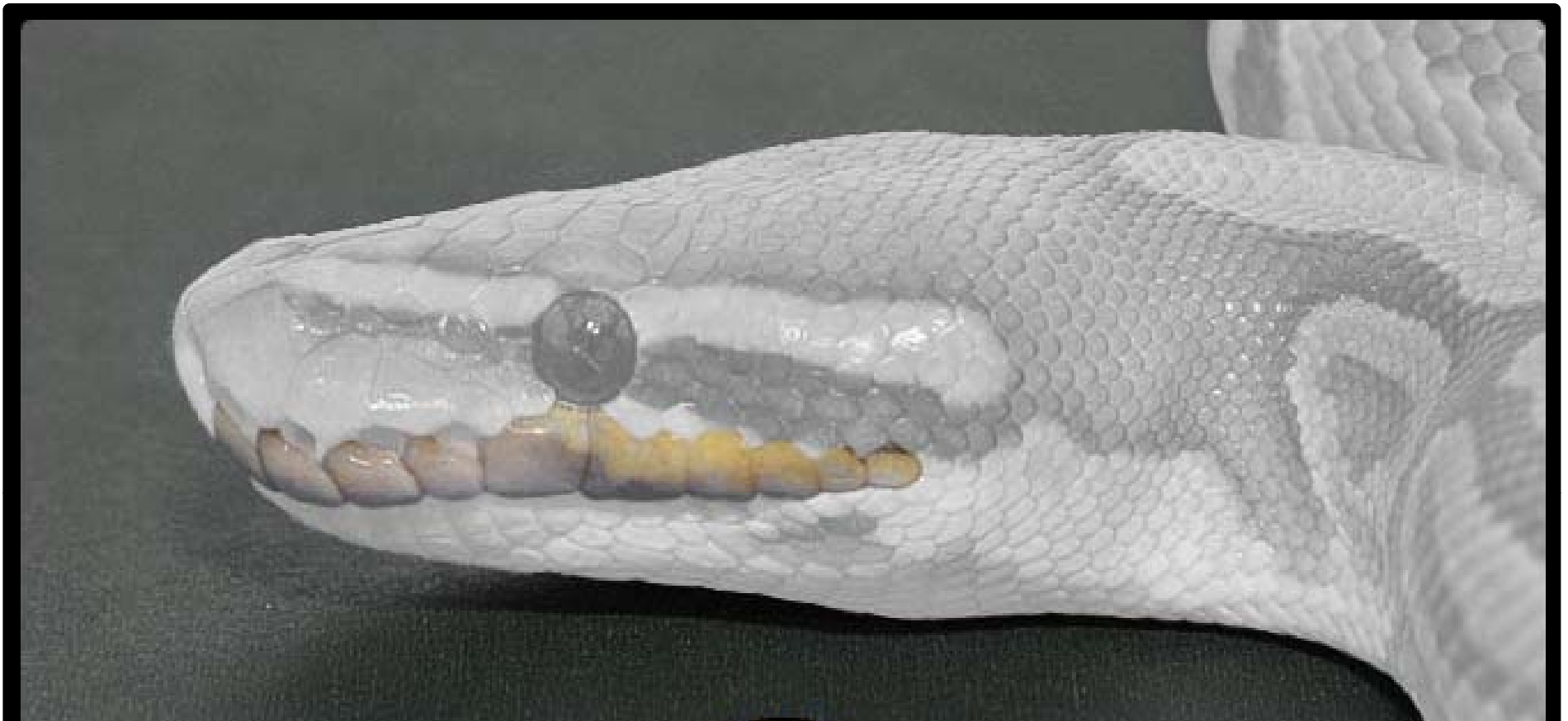
The scalation of
The Ball Python
(Python regius)

- rostral
- nasals
- nostril
- loreals
- **oculars**
- eye
- upper labials
- facial pits
- lower labials



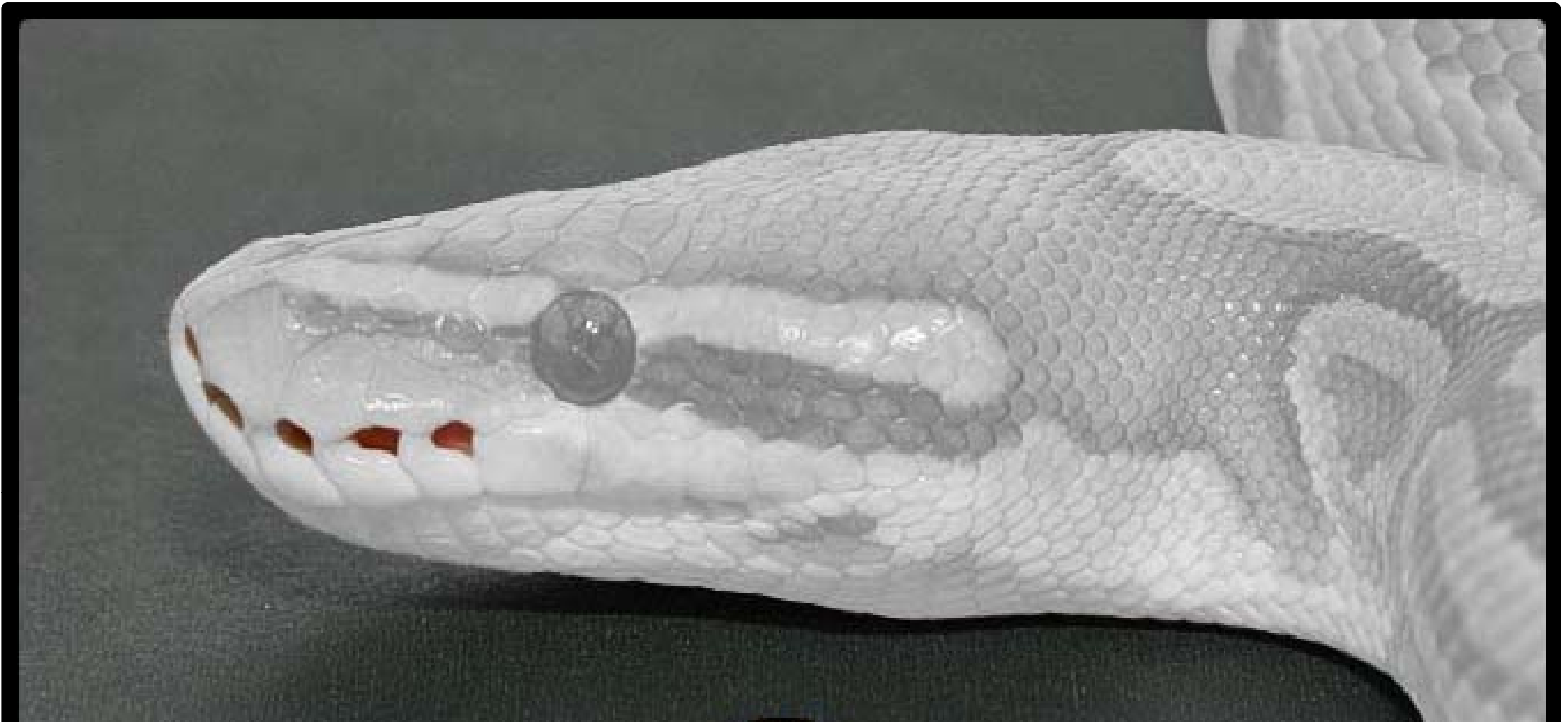
The scalation of
The Ball Python
(Python regius)

- rostral
- nasals
- nostril
- loreals
- oculars
- **eye**
- upper labials
- facial pits
- lower labials



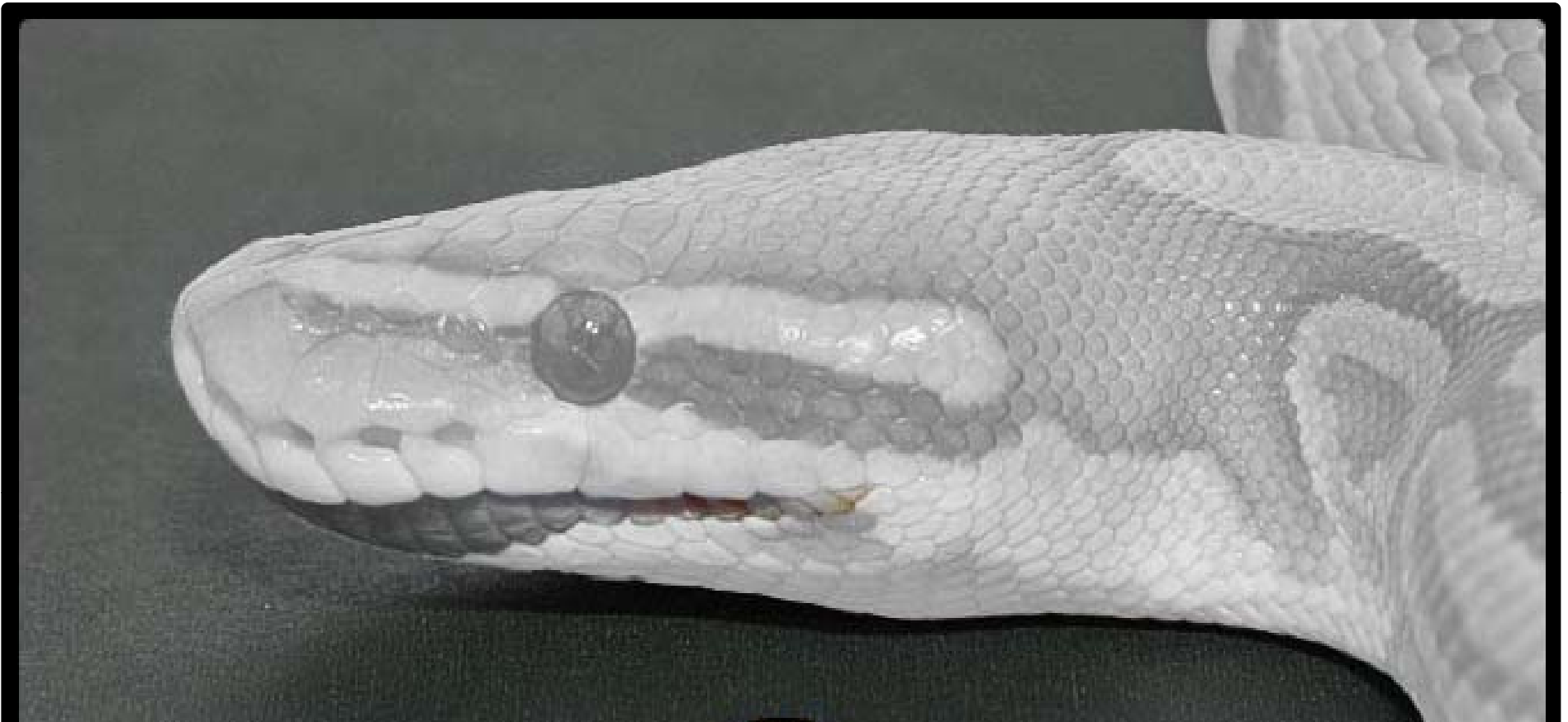
The scalation of
The Ball Python
(*Python regius*)

- rostral
- nasals
- nostril
- loreals
- oculars
- eye
- **upper labials**
- facial pits
- lower labials



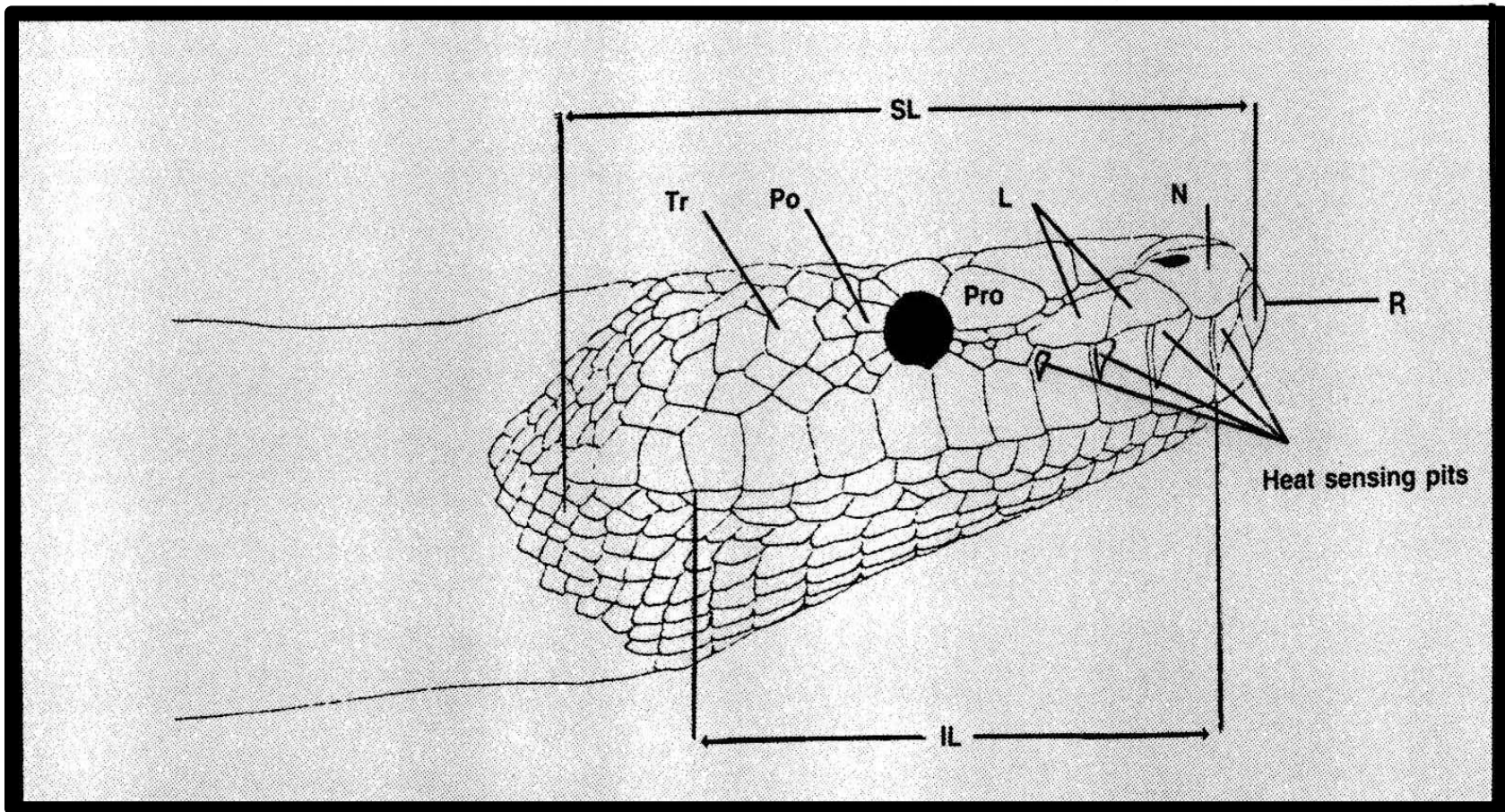
The scalation of
The Ball Python
(Python regius)

- rostral
- nasals
- nostril
- loreals
- oculars
- eye
- upper labials
- **facial pits**
- lower labials

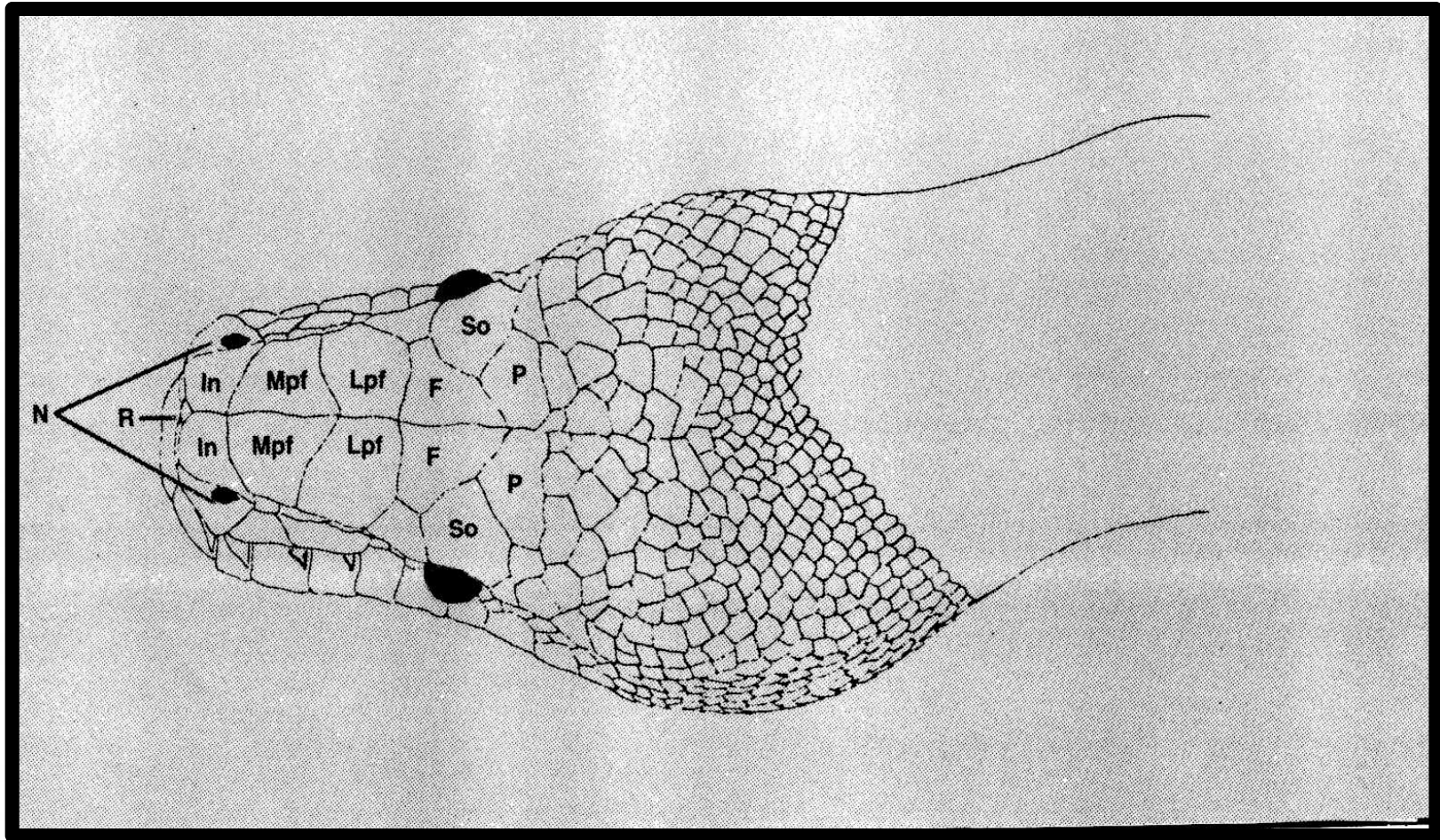


The scalation of
The Ball Python
(Python regius)

- rostral
- nasals
- nostril
- loreals
- oculars
- eye
- upper labials
- facial pits
- **lower labials**



Head scales of an idealized python. F – frontal; IL – infralabials; In – internasal; L – loreal; Lpf – lateral prefrontal; Mpf – medial prefrontal; N – nasal; P – parietal; Po – postoculars; Pro – preocular; R – rostral; SL – Supralabials; So – supraocular; Tr – temporal region.



Head scales of an idealized python. F – frontal; IL – infralabials; In – internasal; L – loreal; Lpf – lateral prefrontal; Mpf – medial prefrontal; N – nasal; P – parietal; Po – postoculars; Pro – preocular; R – rostral; SL – Supralabials; So – supraocular; Tr – temporal region.